



Let **UK** Home

2 Bedrooms

Flat

Located in London

£3,650 Per Month



info@letukhome.co.uk

<https://www.letukhome.co.uk/>

01795 358 886



9 Harbour Way London

E14 9DN



Let UK Home are excited to offer this spectacular two bedroom apartment in the heart of Maine Tower part of the Harbour Central.

This property comprises a large bright open plan kitchen and living room with great views, two double bedrooms with fitted wardrobes (master en-suite), a large family sized bathroom and ample storage.

The apartment is equipped with communal courtyards and fountains. Residents can enjoy fitness and entertainment facilities including spa, gym, pilates room, private cinema and 24h concierge service.

The apartment is within walking distance of the South Quay station(DLR), making it easy to reach important stations such as Canary Wharf Underground Station and the City of London. From Canary Wharf Station, you can take the Jubilee subway line to quickly reach various areas in London.

The development has a superior geographical location with very convenient transportation, allowing easy access to many well-known higher education institutions in London, such as University College London (UCL), King's College London, London School of Economics, and Imperial College London.

The area where the development is located has many landmark attractions, art centers, museums, and theaters, such as London Bridge, the Royal Observatory Greenwich, Canary Wharf Arts Centre, the Museum of London, and the Royal Institute of British Architects, with a strong artistic atmosphere. Additionally, the

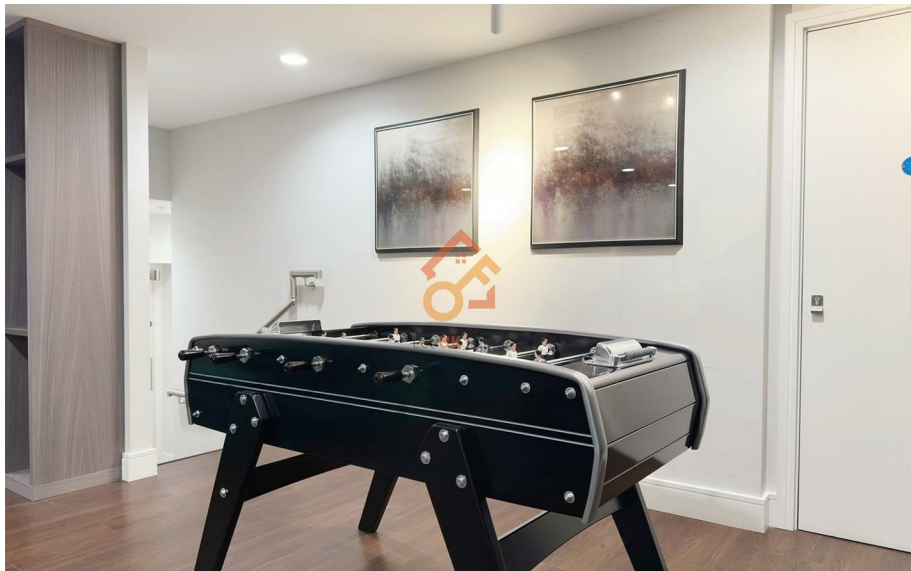
9 Harbour Way London

£3,650 Per Month



- 27th Floor
- 24h Security
- Private Terrace
- Residents Lounge
- Treatment Room

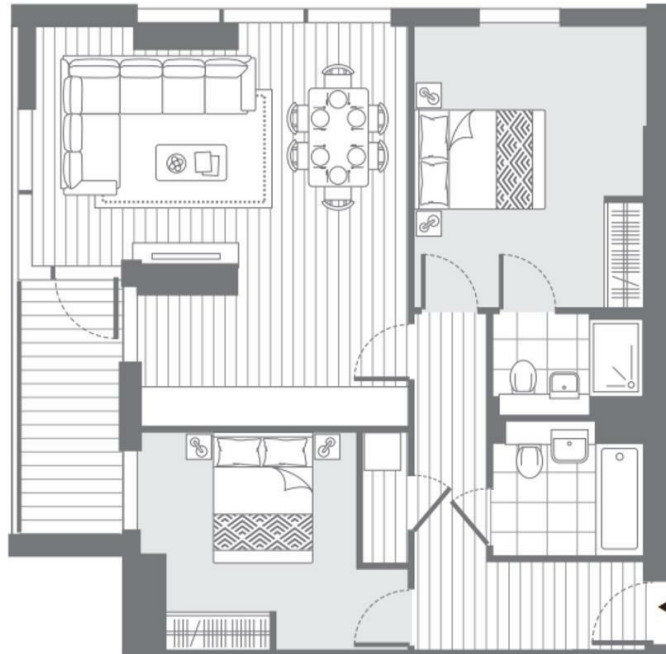
- Concierge Service
- The Gym & The Spa
- Cinema & Game Room
- Sauna & Steam Room
- EPC Rating: B



2 bed apartment

Total area

77.7 sq.m. 836 sq.ft.



Let **UK** Home

3F 2 Eastbourne Terrace
Paddington
London
W2 6LG

01795 358 886

info@letukhome.co.uk

Council Tax Band: F

Local Authority:

Agents Note: Whilst every care has been taken to prepare these particulars, they are for guidance purposes only. All measurements are approximate and are for general guidance purposes only and whilst every care has been taken to ensure their accuracy, they should not be relied upon and potential buyers/tenants are advised to recheck the measurements.

Energy Efficiency Rating		Current	Potential
Very energy efficient - lower running costs			
(92 plus) A			
(81-91) B		85	85
(69-80) C			
(55-68) D			
(39-54) E			
(21-38) F			
(1-20) G			
Not energy efficient - higher running costs			
England & Wales		EU Directive 2002/91/EC	

<https://www.letukhome.co.uk/>